

The Doctor Might See You Now:
The Supply Side Effects of Public Health Insurance Expansions

Craig Garthwaite

April 2011

Abstract

In the United States, public health insurance programs cover over 90 million individuals. Changes in the scope of these programs may have large effects on physician behavior. This study finds that following the implementation of the State Children's Health Insurance Program, physicians decreased the number of hours spent with patients, but increased their participation in the expanded program. Suggestive evidence is found that this decrease in hours was a result of shorter office visits. These findings are consistent with the predictions from a mixed-economy model of physician behavior with public and private payers.

I am grateful for the comments of Jennifer Brown, Leemore Dafny, David Dranove, Mark Duggan, Bill Evans, and Kosali Simon on this draft. All errors remain my own. Please do not cite or circulate.

I. Introduction

In the United States, public health insurance programs provide coverage to over 90 million individuals (United States Census, 2010). Due to the prominence of these programs in the healthcare sector, their expansion may have large effects on physician behavior such as labor supply. The recent health care reform debate in the United States culminated with the signing of the Patient Protection and Affordable Care Act (PPACA)—which is expected to increase enrollment in public health insurance programs by 16 million (Congressional Budget Office, 2010). Given the predicted shortage of physicians and the expected increase in utilization of medical services by the millions of newly insured Americans, policymakers and health professionals have expressed concern about the potential for dramatically longer waiting times for appointments, lower quality of care, and overloaded physician practices (AAMC, 2010). These concerns will only be magnified if public health insurance expansions decrease the labor supply of existing physicians.

Any negative effects of decreased physician labor supply may be worse for Medicaid patients who are covered by a program that is increasingly not accepted by physicians. Cunningham and May (2006) found that from 1996 to 2005 the percentage of physicians reporting no Medicaid patients (as defined by practice revenue) increased by a statistically significant 13 percent. Over the same time period, the percentage of physicians reporting that they were not accepting new Medicaid patients increased from 19.4 to 21 percent. The increase was largest for physicians who reported receiving little revenue from Medicaid.

It is, therefore, important to understand how large expansions of public health insurance programs affect physician labor supply and participation in the newly-expanded public insurance programs. However, there is little existing evidence about the impact of an increase in the size

of a public insurance program on the behavior and practice patterns of physicians. The creation and implementation of the State Children's Health Insurance Program (SCHIP) in the 1990s provides an opportunity to investigate this question. SCHIP was a partnership between federal and state governments intended to increase insurance coverage for low-income Americans under the age of 19. Similar to the anticipated impact of PPACA, the creation of SCHIP represented a large increase in the number of Americans receiving public health insurance coverage. In addition, many states implemented SCHIP through the expansion of income limits for the existing state Medicaid program. The PPACA utilizes a similar strategy.

I apply the Sloan, Mitchell, and Cromwell (1978) model of a mixed economy with private and public payers to this question and predict that physicians affected by the implementation of SCHIP should decrease the quantity of medical services they provide and increase their participation in the public insurance program. This results from the fact that, for a portion of the physicians who were not previously participating in the public insurance program, the implementation of SCHIP changes the marginal patient from one covered by private insurance to one covered by the lower-reimbursing government program.

I test the predictions of this mixed-economy model using two different nationally-representative datasets. Each of these datasets has strengths and weaknesses. The primary dataset for this analysis, the Community Tracking Study physician survey (CTS), contains data on hours spent on patient care, insurance acceptance patterns, and practice level revenue data. In addition, this dataset also allows researchers to track a group of physicians over time and contains state identifiers. However, the CTS does not contain any visit level data detailing the length of office visits or the number of diagnostic services performed—limiting my ability to investigate the mechanism by which physicians change their labor supply.

The second dataset, the National Ambulatory Medical Care Survey (NAMCS), is a visit-level survey of office-based physicians. These data cover physician demographics, patient insurance status, and the amount of time the physician spent with the patient. This dataset does not contain state identifiers or provide the ability to track physicians over time. It also has no practice level information about Medicaid acceptance or the hours worked by physicians. These weaknesses decrease the precision of estimates of the effect of SCHIP.

Using these data, I implement a difference-in-differences (DD) identification strategy that exploits the practice patterns of different types of physicians. Because of the age limit for SCHIP beneficiaries (children under the age of 19), pediatricians were disproportionately affected by the new insurance program. Physicians in other specialties are used to control for secular trends and contemporaneous events that may have influenced the time path of outcomes. To capture state level differences in program generosity which may affect physician behavior, I use the simulated eligibility measure described in Gruber and Simon (2008).¹

Using the DD strategy and the state-based measures of simulated eligibility, I find that SCHIP decreased the number of hours spent on patient care. In addition, this expansion of public health insurance increased the percentage of pediatricians that reported accepting new Medicaid patients, seeing any Medicaid patients, and the amount of revenue received from Medicaid. Examining the visit-level data from the NAMCS, I find suggestive evidence that this decrease in labor supply comes from shorter visit lengths for Medicaid patients after the implementation of SCHIP—in particular, I find a decrease in the number of visits lasting more than 10 minutes (p-value < 0.10). Taken together, the above results support the predictions of the mixed economy model across several different outcomes including labor supply, accepting patients from the new

¹ This method cannot be used on the NAMCS data due to the lack of state identifiers. For the NAMCS estimates, the analysis is limited to temporal variation in the implementation of SCHIP.

public insurance program, and the amount of revenue received from the new program. The consistency across these wide ranging outcomes, which are not intuitively connected through a means other than those proposed by the model, provides support for the totality of the findings.

II. The State Children's Health Insurance Program

SCHIP is a state-administered health insurance program financed jointly by state and federal governments. Created as part of the Balanced Budget Act of 1997, it was intended to provide health insurance coverage to low-income children without health insurance who did not qualify for coverage under the income limits for traditional Medicaid. The legislation gave states three options for creating a program and receiving matching funds from the federal government. States could enroll progressively higher income children in the existing Medicaid program, create a separate state insurance program, or implement a combination of these two approaches. Separate SCHIP programs were allowed more flexibility in program rules. By 1999, national enrollments in SCHIP approached 2 million children (Herz, Fernandez, and Peterson, 2005). As of 2009, the program covered 4.9 million children (Smith et al. 2010).

III. Previous Research on Physician Labor Supply and Medicaid Participation Decisions

There are two main strands of research upon which this study builds. The first analyzes the determinants of physician procedure intensity and labor supply. There is a long theoretical literature studying the ability of physicians to induce demand for their services (Fuchs, 1978; Pauly, 1980; Dranove, 1988). The essence of the induced demand model is that following a negative shock to earnings, doctors take advantage of the information asymmetry between

physicians and their patients to increase the intensity of treatment.² To date, the empirical support for models of physician-induced-demand has been mixed.³

One method to test for physician-induced-demand is to examine differences in diagnostic testing patterns based on physician ownership of the testing equipment—physicians receive more revenue from each diagnostic test performed when they own the equipment. Several authors have found the physician ownership of this equipment increases the utilization of these services (Hillman et al. 1990; Hillman et al., 1992; Crane, 1992; Mitchell and Scott, 1992). Other authors have using quasi-experimental variation in physician income and found that physicians respond to income shocks by increasing treatment intensity (Gruber and Owings, 1996).

Most of these previous studies addressed questions related to treatment intensity and revenue generating activities—not specifically labor supply (although the concepts are clearly correlated). An outstanding question in the literature is: What is the effect of income shocks on the actual amount of labor supplied by physicians, as opposed to simply their revenue generating activities such as increased testing or referrals? Enterline, McDonald, and McDonald (1973) interviewed random samples of Canadian physicians before and after the introduction of a universal health care program in Quebec. In this context, physicians decreased their hours worked following the implementation of the universal health care program. More recently, Staiger, Auerbach, and Buerhaus (2010) found that the observed decline in the reported number of hours worked for physicians from 1996 to 2008 was related to declines in physician fees.

² While Dranove (1988) points out that the implications of this model exist in any market with an expert seller and an uninformed buyer, it is most often applied to the medical marketplace.

³ Many of the original empirical tests of induced demand used two-stage least squares methods to estimate the effect of the supply of physicians on the demand of services (Fuchs, 1978; Cromwell and Mitchell, 1986). The authors attempted to identify plausibly exogenous variation in the location decision of physicians, and then used this exogenous increase in supply to determine the effect on the consumption of medical services. Dranove and Whener (1994) highlighted potential econometric flaws in this approach and, as a falsification test, applied the same method to childbirth—an area where there is likely little induced demand. The empirical approach still found an effect, casting doubt on the validity of earlier estimates.

In addition to the literature describing physician-induced-demand and labor supply, my analysis builds on previous work estimating the physician Medicaid participation decision. Sloan, Mitchell and Cromwell (1978) provided one of the first models of physician participation in Medicaid. Their mixed-economy model, which serves as the starting point for this paper, is described in detail below. In addition to their theoretical contribution, the authors analyzed survey data and found that factors which changed the relative reimbursement from the public program (either higher Medicaid fee schedules or lower reimbursement rates in the private market) were associated with increased participation in the government program. Subsequent studies have also found that non-participation was sensitive to the reimbursements and administrative burdens involved with Medicaid (Garner, Liao, and Sharpe, 1979; Mitchell, 1991), the size of the Medicaid eligible population in the geographic area (Mitchell, 1991), other community level characteristics such as per capita income and segregation (Perloff et al., 1997), and physician specific political beliefs (Sloan, Mitchell, and Cromwell, 1978).

Two previous works have examined the effect of an increase in Medicaid eligibility on physician behavior. Baker and Royalty (2000) found that the Medicaid expansions for pregnant women led to improved access to public clinics and hospitals for poor patients. Bronstein, Adams, and Florence (2004) examined physician participation responses in communities in Alabama and Georgia to the implementation of SCHIP and found that physicians in Georgia, who were also covered by the separate state program, increased their participation in the government insurance program while those in Alabama did not.

IV. The Effect of Public Health Insurance Expansions on the Private Insurance Market

Policy makers are often concerned with “crowd out”, a phenomenon whereby previously uninsured individuals cannot secure coverage because previously *insured* individuals now consume public health insurance. Cutler and Gruber (1996) found that following the original Medicaid expansions, the uninsurance rate fell by only half as much as the increase in those covered by the expansion—a crowd out rate of 50 percent. Building on this foundational study, a sizeable literature emerged estimating the presence and magnitude of crowd out following the expansion of public health insurance programs. Using a variety of methods, authors have also found evidence of varying levels of crowd-out (Dubay and Kenney, 1996 and 1997; Yazici and Kaestner, 2000). A second set of authors have used the Survey of Income Program Participation (SIPP), which has a smaller sample size than the CPS but has longitudinal information on insurance, and found little evidence of crowd out (Bloomberg et al., 2000; Card and Shore Sheppard, 2004; Ham and Shore Sheppard, 2005).

These earlier studies estimated the crowd out from the original expansions to the Medicaid program in the late 1980s. Since that time, a number of authors have examined the amount of crowd out from SCHIP. Similar to Cutler and Gruber’s original work, LoSasso and Buchmueller (2004) found a crowd out rate of 50 percent. More recently, Gruber and Simon (2008) found a crowd out rate of approximately 60 percent from the creation of SCHIP.

V. A Mixed-Economy Model of Physician Behavior

I apply the model of physician pricing in a mixed economy introduced by Sloan, Mitchell, and Cromwell (1978) to examine how physicians respond to an increase in the size of the government’s role in the insurance sector. In this model, a physician faces two markets: one with privately-insured patients displaying a downward sloping demand curve and another with

government-insured patients whose insurance pays a fixed reimbursement. Physicians will accept patients in the private market until the marginal revenue equals the government reimbursement rate. After that threshold, they will accept Medicaid patients until their marginal costs are equal to the Medicaid reimbursement rate. For simplicity, the model traditionally assumes that physicians provide a homogenous good, which can be thought of as office visits or other standard medical services. Extensions to this assumption are discussed below.

Figure 1 provides a graphical representation of this model. In the pre-expansion time period, the marginal revenue curve faced by a physician is the bold line composed of segments of the MR_p curve (which represents the marginal revenue from treating privately insured or self-pay patients) and the P_m curve (which represents the fixed reimbursement from the government insurance program). In this case, physicians with marginal costs curves of MC and MC' would not accept patients from the government market.⁴ A physician with the curve in the neighborhood of MC'' , however, would see a mixture of both private and public sector patients.

The most obvious effect of the expansion of a public insurance program is an increase in the number of people covered by the program. In addition, crowd-out will shift individuals from private to public health coverage. Under the simplifying assumption that the crowd-out from SCHIP occurs randomly across insured individuals regardless of their pre-expansion willingness to pay for medical services, the effect on the private market can be seen by the inward rotation of the demand curve in Figure 1.⁵ As a result, the post-expansion marginal revenue curve faced by

⁴ These physicians are easily observable in the CTS, where 12.33 percent of physicians report receiving no revenue from Medicaid and 19 percent of physicians report they are not accepting new Medicaid patients during the first panel of the survey.

⁵ The simplifying assumption is reasonable and makes the following analysis more intuitive. The qualitative predictions from the model will carry through under more complicated assumptions about the pattern of crowd out. The most realistic alternate assumption would be that the crowd out would primarily occur among individuals who had the least generous insurance coverage. If this were to occur, the magnitude of the predicted effect would increase.

the physician is constructed by the dotted lines marked by the curves MR' and its intersection with the P_m curve.

A physician's response to this expansion is determined by his or her marginal cost curve and its intersection with the post-expansion marginal revenue curve. Consider a physician with a marginal cost curve in the neighborhood of MC . In the pre-expansion time period, this physician would not treat Medicaid patients. After the expansion, this doctor's behavior is predicted to change in two ways: (1) the physician will provide a lower quantity of medical services (moving from Q_1 to Q_2) and (2) the physician will begin to participate in the Medicaid program by accepting new Medicaid patients. Physicians with marginal cost curves similar to MC'' and MC' should not alter their labor supply or Medicaid participation—they will continue to provide the same quantity of services and only see private patients because their marginal patient is not affected by the crowd out of individuals from the private market. Similarly, physicians with marginal costs similar to MC'' should provide the same quantity of medical services.

Overall, the mixed-economy model predicts that following:

Prediction 1: The implementation of SCHIP should decrease the quantity of medical services provided by physicians with little pre-SCHIP Medicaid contact who treat patients under age 19.⁶

Prediction 1a: Holding their marginal cost curve constant, similar physicians who are already heavily participating in Medicaid should see no change in the quantity of medical services provided.

Prediction 2: The implementation of SCHIP should increase physician participation in Medicaid among physicians with little pre-SCHIP Medicaid contact who treat patients under age 19.

⁶ In contrast, earlier studies examining induced demand suggest that physicians should increase, rather than decrease, the quantity of medical services provided in response an income shock such as the implementation of SCHIP. It is important to note, however, that the predictions of the mixed economy model above do not involve a shift in the labor supply curve of physicians.

Prediction 2a: Similar physicians who are already heavily participating in the Medicaid program should not see any change in their participation or nonparticipation decision.

Prediction 2b: The implementation of SCHIP should increase the percentage of revenue received from Medicaid patients for all physicians with patients under the age of 19.

The model described above is used traditionally to describe the provision of office services or other discrete medical activities. As is the case in this study, the quantity of medical services underlying the model above can also be extended to the broader concept of physician labor supply and hours worked. In this case, the marginal revenue curve represents the expected reimbursements received by the physician for the next hour of work seeing either a patient covered by either private or the public health insurance. One might worry that physicians respond to exogenous changes in the insurance market by spending more time with each patient without billing them for the extra attention. However, since physicians trade-off patient hours for leisure time, it is reasonable to assume they would not react to changes in the insurance market by providing more unreimbursed labor. Under this assumption, the quantity of medical services in predictions (1) and (1a) can be thought of as hours spent with patients.

It is important to note that under the mixed economy model, in a situation of no crowd-out, this model would predict either no change (or an increase) in the number of hours worked by affected physicians and no effect on physician participation. Without any crowd out, there is no inward rotation of the demand curve. Instead, the increase in the number of individuals eligible for Medicaid comes primarily from the downward sloping portion of the demand curve below the reimbursement rate of Medicaid. In this case, only physicians with a marginal cost curve in the neighborhood of MC'' , if they exist, should experience a change in reimbursements from

their marginal patient. Since this marginal patient was either uninsured or privately insured by a insurer paying reimbursement rates lower than those offered by Medicaid, there should be no decrease in labor supply or increase in program participation. Therefore, finding results consistent with the model's predictions serve as further evidence of crowd-out caused by SCHIP.

The mixed economy model was first developed to explain physicians respond to the expansion of an existing fixed reimbursement government insurance program. Given that this paper focuses on the creation of a new government program, it is natural to question the appropriateness of the model in this context. As discussed above, states were given the freedom to implement SCHIP through that creation of separate state programs aimed at increasing physician participation. Therefore, the magnitude of the effect of SCHIP on physician behavior may differ depending on state-level implementation. To address this concern, the discussion below provides separate analyses of samples containing all states and samples from states that increased their existing Medicaid program (hereafter referred to as "Medicaid expansion states").⁷ These states are also those most directly comparable to the model above.

VI. Data

The primary dataset for this analysis is the Community Tracking Study Physician Survey (CTS). This dataset is a nationally-representative random sample survey of physicians who provide at least 20 hours of direct patient care per week. The sample is constructed from the master files of the American Medical Association and the American Osteopathic Association.

⁷ However, it is not the case that the absolute level of the Medicaid reimbursement rate should drive, in isolation, the estimated response of physicians. The estimated physician response to an expansion in this model is determined jointly by the distribution of marginal costs among physicians and the difference between the reimbursements received in the private market and those from Medicaid for patients who are crowded out. States with high pre-expansion reimbursement rates are expected to have a different concentration of physicians whose marginal costs place them at the participation margin relative to the concentration in states with lower pre-expansion reimbursements. There is no clear prediction about the size of this concentration based on the reimbursement rate.

Data from 60 communities are in the primary sample. Among these communities, 12 are designated as “high intensity” locations that have a larger sample size. To allow for national estimates, the data from the remaining 48 communities are supplemented with responses from a random national sample of physicians. The dataset oversamples primary care physicians and includes non-federal physicians in a wide variety of practice settings including group practice, health clinics, hospitals, government facilities, and universities.

The analysis uses the longitudinal component of three waves of the survey (1996-1997, 1997-1998, and 2000-2001). The longitudinal component of each wave, which interviewed a smaller group of physicians, allows for the use of physician-level fixed effects. Moreover, I can estimate the heterogeneous effect of SCHIP based on the initial conditions of physicians (in particular their pre-expansion Medicaid participation). The increase in information from the panel does, however, come at the cost of sample size—only 5,060 physicians were interviewed for each panel of the dataset in this time period.

The CTS contains data on the number of hours per week physicians spend on patient care and medical care, respectively.⁸ Two questions pertain to participation in the Medicaid program: whether the physician is accepting “new Medicaid patients” and the percentage of the practice revenue from Medicaid. Data on Medicaid reimbursement rates are available for 1993, 1998, and 2003 from the Urban Institute’s survey of physician fees (Zuckerman and Norton, 2000; Zuckerman et al., 2004).⁹ These data are matched to the closest respective years in the CTS.¹⁰

⁸ Physicians are asked for the number of hours spent on “medically related activities” and “direct patient care activities” during the last completed week of work. Because the number of hours spent on patient care is a subset of all medical activities, the patient care variable is replaced with the medical care data if the reported number of hours on patient care exceeds the reported number for medical activities. This occurred for only 0.14% of observations in the sample.

⁹ A small number of observations were dropped in years when Medicaid fee data are not available for a physician.

¹⁰ These data are for the Medicaid fee for service (FFS) system. Many Medicaid enrollees are now covered by managed care, but in general the reimbursements for the physicians under these systems are intended to be similar to those for the FFS system.

The longitudinal component of the CTS allows physicians to be tracked over time and includes detailed information about hours worked, insurance participation, and practice revenue. However, the data contain no information on the number of patients seen, office visits provided, or services rendered during a visit. In addition, the revenue data is at the practice rather than the physician level.¹¹

Since the CTS does not contain a visit-level component, it is not possible to analyze the effect of SCHIP on the number of patients or on visit-level practice patterns. To study visit level practice patterns, I use data from the 1993-2002 National Ambulatory Medical Care Survey (NAMCS).¹² NAMCS is a nationally-representative survey designed to provide information on the use of ambulatory medical care services in the United States. Administered by the Centers for Disease Control, it surveys office-based physicians on a random sample of office visits over a one-week period. Data are collected on a variety of dimensions, including patient demographics, diagnoses, treatments, insurance status, and visit length.

Because it does not contain longitudinal data, the NAMCS cannot be used to classify physicians based on their pre-expansion participation in Medicaid. The survey also lacks state identifiers and, therefore, limits my ability to use the simulated eligibility measure of variation in SCHIP generosity. These factors may reduce the precision of estimates from these data.

VII. Empirical Strategy

The sample for the difference-in-differences analysis described below is composed of physicians with low pre-expansion participation in Medicaid. From the CTS, I categorize physicians as low-Medicaid participators if the percentage of their revenue from Medicaid prior

¹¹ I address this limitation by using a subset of data from small group practices with one or two physicians.

¹² This covers the period of five years of data before and after the creation of SCHIP.

to SCHIP is less than or equal to five percent. In the first panel of the CTS, 42 percent of all physicians and 31 percent of pediatricians fall into this category.¹³

To implement the difference-in-differences strategy, I must identify a treatment group of physicians who are affected by the public health insurance expansion and a control group of physicians whose practices were not affected by the policy change. As discussed above, the primary target of SCHIP were children under the age of 19. Therefore, pediatricians, whose caseload is primarily composed of individuals under the age of 19, form the treatment group for this study. Identifying a comparison group requires selecting a set of physicians whose time path of outcomes would be, in the absence of the implementation of SCHIP, similar to that of pediatricians. I use physicians in all other specialties as the control group.

While the CTS does not allow any direct tests of the parallel trends assumption underlying the DD identification strategy, I examine the descriptive statistics by specialty to assess the similarity of these two groups. Table 1 presents these statistics for the first panel of the CTS based on both specialty and pre-expansion Medicaid participation. Focusing on the physicians reporting less than five percent of their pre-expansion practice revenue from Medicaid, pediatricians are most similar to internists and general practitioners. They are less similar to physicians that are in the general specialties, surgical specialties, obstetrics and gynecology, and psychiatrists. The outcome variables defining Medicaid participation appear in the last two columns. On average, the percentage of revenue that pediatricians earn from Medicaid is similar to the physicians with “internal medicine” and “general and family practice”

¹³ Data on the percentage of revenue from Medicaid have large concentrations of respondents clustered on round numbers (5, 10, 15). Ideally, I would identify physicians that report no pre-SCHIP revenue from Medicaid. However, in the first panel of CTS only 10 percent of pediatricians fall into this category. Another possible measure of a low Medicaid provider is not accepting new Medicaid patients in the time period prior to the implementation of SCHIP. The sample size of this group is larger than those reporting no revenue from Medicaid, but still relatively small, creating concerns of Type II errors. Estimating the main results of the paper using either of these two alternate pre-SCHIP Medicaid participation produces estimates that are qualitatively similar in magnitude but are less precise than those presented below.

specialties. The outcomes of new Medicaid patient acceptance are also similar between the groups—though here there is a larger difference between pediatrics and general and family practice. Pediatricians appear to work slightly fewer hours than physicians in other specialties, although this difference is small in magnitude.¹⁴

Without several periods of pre-expansion data on physicians, it is not possible to examine the pre-treatment trends of CTS outcomes by physician specialty. However, using the NAMCS, I can examine differences in the trends between the treatment and control groups for visit-level outcomes such as amount of time spent with the physician. Figure 2 shows the average duration of a physician visit by specialty between 1993 and 2002. The dashed vertical line represents the implementation year of SCHIP for the vast majority of states.¹⁵ Prior to the implementation of SCHIP, the average duration for each specialty followed similar trends. After 1998, the average duration for a visit between physician types exhibits a sharp break. Although they are for a different outcome and data, combined with the descriptive statistics by physician specialty in Table 1, these similar pre-treatment trends provide additional support for the DD strategy.

Recall that states were given discretion over the size of their program, including setting income eligibility limits. If physicians' responses to the expansion of a public insurance expansion are related to the scale of the program, then variation in program sizes can provide valuable information. One naïve method of exploiting the state-based variation in program size classifies states by the number of children actually enrolled in the program. This method, however, conflates other factors such as changes in local economic conditions with

¹⁴ The most striking way in which pediatricians differ from other physicians is that pediatricians are almost all primary care physicians. While the main results of my analysis will pertain to a comparison group of all physicians, I will also estimate results containing only primary care physicians. This smaller sample size decreases precision. Finding similar results with this more limited control group provides suggestive evidence that using the full sample of physicians is not biasing the main results.

¹⁵ NAMCS does not contain state identifiers and, therefore, it is not possible to perfectly identify when SCHIP was implemented for each physician. Examining data from the simulated eligibility measure, I find that 1998 marks the first year of a large increase in the percentage of children who are eligible for Medicaid and SCHIP in most states.

programmatic changes such as income eligibility limits. For example, if local economic conditions are correlated with physician behavior, using SCHIP enrollment as a measure program size would generate biased estimates of the effect of public health insurance expansions on supplier behavior.

This problem in identifying state variation in the size of Medicaid expansions was first identified in Cutler and Gruber (1996). To overcome the problem, the authors generated a simulated eligibility instrument. Gruber and Simon (2008) implemented a similar procedure for SCHIP. In a nationally-representative sample of children under the age of 19 from the 1996 CPS (whose family income was adjusted for inflation in subsequent years), I determined patients' eligibility for Medicaid and SCHIP using program rules from 1996, 1999, and 2001—the years for which there is corresponding CTS data. Simulated eligibility was then aggregated to the state level to determine the percentage of children under the age of 19 from the CPS sample eligible for either Medicaid or SCHIP in each year in each state. Changes in this percentage provide an unbiased measure of state-level differences in program rules. The following analysis explores whether physicians' responsiveness varies with the magnitude of state expansions.¹⁶

Table 2 contains descriptive statistics of the simulated eligibility measure of SCHIP expansion. Between 1996 and 2001, the average increase in the percentage of children from the national sample eligible for this public insurance coverage was 20.9 percentage points. For states included in the CTS, the smallest increase was 5.4 percentage points in North Dakota and the largest was 49.48 percentage points in Missouri.¹⁷ I use this measure of simulated eligibility in the following OLS regression:

¹⁶ Gruber and Simon (2008) contains a more detailed description of this method of determining state-level changes in program size.

¹⁷ As of September 30, 2001, the income limit for eligibility for the SCHIP program in North Dakota was 140% of the poverty line, while the limit in Missouri was 300% of the poverty line.

$$HOURS_{it} = \alpha + \pi_1 REIMB_{it} + \beta_1 SIMELIG_{it} + \beta_2 SIMELIG_{it} * PED_i + \mu_i + \rho_t + \varepsilon_{it} \quad (1)$$

where $HOURS_{it}$ is equal to the number of hours spent on either patient care or direct medical services during the last full week of work by physician i during CTS panel t , $REIMB_{it}$ is the Urban Institute Medicaid reimbursement index, μ_i is an physician fixed effect, ρ_t are CTS survey year dummies, and ε_{it} is an idiosyncratic error term. PED_i is an indicator variable for a physician reporting a primary specialty of pediatrics, and $SIMELIG_{it}$ is the simulated eligibility measure described above. The coefficient of interest is β_2 . Under the assumption that the pre-expansion trends in hours worked are common across all physicians, this coefficient represents the effect of the expansion of SCHIP on the number of hours worked by a pediatrician.

Equation (1) is estimated for low-Medicaid participating physicians, defined as those reporting five percent or less of their practice revenue from Medicaid prior to SCHIP. As discussed above, states that created a separate state program instead of expanding Medicaid were also allowed to make programmatic changes such as higher reimbursement rates and different provider networks. In general, these changes were intended to increase physician participation in the program by decreasing the difference between the public and private insurance plans. Another significant difference is that in states with a separate program, physicians could choose to treat SCHIP patients without opening their practice to all Medicaid patients. To address any concerns of bias from these programmatic differences, I generate estimates for a sample containing only Medicaid expansion states. If these differing rules did decrease the influence of the expansion on physician behavior, estimates from the Medicaid expansion states should be larger in magnitude than those for the full sample.

The underlying assumption of the differences-in-differences model is that the behavior of the comparison sample provides an estimate for the time path of outcomes for the treatment

group had the intervention, in this case the creation of SCHIP, not been implemented. If there were other unmeasured and time varying factors differentially affecting only pediatricians in the low-Medicaid exposure sample, β_2 would provide a biased measure of the effect of SCHIP. This potential bias can be overcome by using the behavior of another group of pediatricians who should react similarly to secular trends and contemporaneous shocks but are unaffected, or less affected, by the implementation of SCHIP. Under the predictions of the mixed economy model above, SCHIP should not affect either the Medicaid participation or labor supply decisions of physicians who are already heavily participating in the Medicaid program. Therefore, these physicians can be used as an additional control for specialty specific secular trends or contemporaneous shocks that may be affecting pediatricians but are unrelated to the public health insurance expansion. The equation of interest in this difference-in-difference-in-differences (DDD) identification strategy is:

$$\begin{aligned}
 HOURS_{it} = & \pi_0 + \pi_1 REIMB_{it} + \eta_1 SIMELIG_{it} + \eta_2 SIMELIG_{it} * PED_i + \\
 & \eta_3 SIMELIG_{it} * 5\%MCAID_i + \eta_4 PED_i * SIMELIG_{it} * 5\%MCAID_i + \mu_i + p_t + \varepsilon_{it}
 \end{aligned} \tag{2}$$

where $5\%MCAID_i$ is an indicator variable equal to 1 if a physician reports receiving 5 percent or less of their pre-expansion practice revenue from Medicaid. All other variables are defined as in equation (1) and the DDD parameter of interest is η_4 .

In addition to predictions regarding labor supply, the mixed-economy model predicts that the implementation of SCHIP should change the participation of physicians in the program. Therefore, I also estimate specifications of equation (1) and (2) with dependent variables for several measures of Medicaid participation. Due to the CTS data limitations described above, these estimates will be provided for different samples of physicians based on the type of SCHIP expansion in their state and the practice setting of the physician.

The shortcomings of the NAMCS make the empirical strategy above infeasible with these data, and I propose an alternative empirical strategy here. Instead of using state and time variation in SCHIP, I exploit the fact that most states implemented their program in 1998 and use temporal variation to identify the effect of the program on physician practice patterns. Because physicians cannot be grouped based on their pre-expansion Medicaid revenue in the NAMCS data, the sample for these estimates will contain a large number of high Medicaid participating physicians whose labor supply is predicted to be unaffected by the implementation of SCHIP. This generates a bias away from finding an effect of the program on visit duration. With these caveats in mind, I estimate the following equation:

$$DURATION_i = \alpha + \pi_1 X_i + \gamma_1 POSTSCHIP_i * PED_i + \varepsilon_i \quad (3)$$

where $DURATION_i$ will be a series of variables describing the length of time patients spent with a physician, X_i is a set of demographic controls for such factors as physician specialty, doctor type (MD or DO), whether the physician practices in an MSA, patient age and race, and indicator variables for each NAMCS survey year, PED_i is an indicator variable equal to one if a physician reports a primary specialty of pediatrics, and $POSTSCHIP_i$ is an indicator variable equal to one in the post-1997 NAMCS survey years. The coefficient of interest, γ_1 , represents the change in the visit length for patients visiting pediatricians following the implementation of SCHIP compared to visit length for patients visiting other specialists. Given the large sample size of the NAMCS, this equation will be estimated on a sample of physicians most likely to be primary care physicians: general practitioners, internists, and pediatricians.

The inability to track physicians over time in the NAMCS rules out the DDD identification strategy used in equation (2). However, one might still worry that within-specialty factors may bias the DD estimates. To address this concern, I implement a DDD identification

strategy using the visit lengths for privately insured patients to control for other factors influencing the duration of visits to pediatricians.¹⁸ Under the assumption that in the absence of the implementation of SCHIP the visit duration for patients with different insurers would have had similar trends, this DDD strategy will provide consistent estimates of the effect of the implementation of SCHIP on visit length. Figure 3 contains the average visit length for patients visiting pediatricians by insurance status and year. Except for a separation in 1996, the pre-expansion trends in visit length for these two groups of patients are similar, providing support for the underlying assumption of the DDD identification strategy.

The validity of the NAMCS estimates hinges on the parallel trend assumption. While Figure 2 and 3 provide some evidence of these trends, a more rigorous exploration of this assumption is provided by the event time graphs shown in Figure 4 and 5. These graphs provide the parameters estimates the DD and DDD identification strategy for the interaction term between the indicator variable for being treated and each respective survey year (excluding 1993) for each measure of visit duration: length in minutes, the natural log of visit length, and office visits shorter than 10 minutes. Year 0 in these graphs represents 1998, the first year of SCHIP. For reasons described in Section VI, the estimates are generally imprecise and volatile. However, the figures do provide some suggestive evidence: for both the log of the visit length and a visit length being less than or equal to ten minutes, the trend prior to 1998 is relatively smooth. Following 1998, for both figures, there is a general decrease in visit length and increase in the probability of a visit length of less than ten minutes. This pattern is most apparent for visits shorter than 10 minutes in Figure 5.

¹⁸ This DDD strategy would not work if physicians provided similar visit lengths regardless of insurance type. Examining the NAMCS, however, shows that visit lengths with pediatricians are shorter for Medicaid patients than they are with private patients.

VIII. The Effect of SCHIP on the Quantity of Medical Services Provided

The top panel of Table 3 reports the OLS estimates for specifications of equations (1) and (2) with dependent variables for the two measures of physician labor supply. Recall that the coefficient of interest is the interaction term for being a pediatrician and the simulated eligibility variable. The average increase in the percentage of children from the national sample that are newly eligible for SCHIP between 1996 and 2001 was 20.9 percentage points. Therefore, the effect of SCHIP on physician labor supply for physicians in states implementing an expansion of the average magnitude is determined by multiplying the estimated coefficient by this measure of the average increase. Column (1) contains the estimated effect of SCHIP on the number of hours spent each week on patient care for a sample of low Medicaid participating physicians. The coefficient for these pediatricians is -9.57, statistically significant at a p-value of 0.05. Under the assumption that pediatricians will react similarly to physicians in other specialties, the average post-SCHIP increase in simulated Medicaid eligibility decreased the hours worked by affected pediatricians by approximately two hours.¹⁹ For states at the 25th percentile of the increase for SCHIP, the policy change decreased hours by approximately 1.6 hours; for those at the 75th percentile, the decrease was 2.3 hours. In the pre-expansion time period, these pediatricians reported working an average of 41.9 hours, suggesting that physicians exposed to the average increase in SCHIP decreased their patient care hours by nearly 5 percent.

¹⁹ While the demographic data from the CTS discussed above show that pediatricians are similar to other doctors on a number of dimensions, they are disproportionately more likely to be a primary care physician than are specialists in other areas. If primary care physicians reacted differently to contemporaneous shocks or had different pre-treatment trends in the dependent variables, the results will be biased. Unreported results from a sample of primary care physicians in Medicaid expansion states returned a statistically significant (p-value <0.10) coefficient of -7.996 (4.268). This corresponds to a decrease of 1.7 hours per week spent on direct patient care for physicians exposed to the average expansion. Overall, the estimates from the sample of primary care physicians in Medicaid expansion states are similar in magnitude but less precisely estimated than the corresponding estimates in Table 3. This finding should not be surprising given the smaller sample size when only considering primary care physicians.

Column (2) reports the DDD estimates for all physicians. These results show a statistically significant ($p\text{-value} < 0.10$) decrease in labor supply for low Medicaid participating pediatricians. A similar decrease was not seen for high Medicaid participating pediatricians. Columns (3) and (4) contain the estimates for the number of hours spent on medical care. These results are smaller in magnitude and less precise than those for hours spent on patient care. For example, column (4) contains the DDD coefficient, which show a statistically insignificant decrease of 1.36 hours spent on medical care for low-Medicaid participating physicians exposed to the average increase in program size.

The top panel of Table 3 reports the labor supply results for physicians in all states. These estimates involve a tradeoff between the precision generated by the large sample size and a possible bias introduced by the simultaneous change in both the size of the public health insurance market and the different rules for the separate state program. The bottom panel of Table 3 contains estimates for physicians practicing in Medicaid expansion states. These point estimates are uniformly larger and more precisely estimated than those for the sample of all physicians. For example, the estimated effect on hours spent on patient care for low Medicaid participating pediatricians is 3.48 hours—a decrease in hours of 7.5 percent. This result is statistically significant at the 0.05 level and 50 percent larger than the estimate for all physicians, although equality of the two estimates cannot be rejected with 95 percent confidence. In contrast to the sample of all physicians, the estimates for hours spent on medical activities for pediatricians in Medicaid states are large and statistically significant at a $p\text{-value}$ of 0.05. Because the policy changes involved in the creation of separate state programs were intended to decrease the difference between public and private insurance, it should not be surprising that the estimated decrease in hours for the Medicaid expansion states are larger in magnitude.

While the results from the CTS clearly show reduced physician labor supply in response to SCHIP, the mechanism by which this reduction occurs remains an open question. While the CTS contains no visit level data on practice patterns, the NAMCS does contain data on the number of minutes spent with a physician during a visit. Column (1) of Table 7 contains the DD estimates from equation (3) for the effect of SCHIP on visit length. While none of these estimates are statistically significant, all are large and in the hypothesized direction. Specifically, SCHIP is associated with negative point estimates on duration and positive estimates for the linear probability model indicating a visit length of less than or equal to ten minutes.

Column (2) of Table 7 contains the DDD estimates. In general these estimates are slightly larger and are more precisely estimated than the estimates in column (1). For example, the estimate for visit length suggests a 1.2 minute decline in visit length, with a p-value of 0.11. In the pre-expansion time period, pediatricians spent an average of 13.12 minutes in office visits with Medicaid patients. This suggests that the creation of SCHIP decreased visit lengths by approximately 9 percent. The estimates in the third row show that the implementation of SCHIP increased the probability of having a visit of less than or equal to 10 minutes by 6.5 percentage points. This estimate is statistically significant at the 0.10 level.²⁰ It is important to note that these estimates correspond to the amount of time spent with the physician and not the length of time the physician spends in the office. Therefore, the estimate effect could simply indicate a substitution of physician by other practice members such as a nurse practitioner.

In addition to these event time graphs in Figure 4 and 5, I report a placebo regression using pre-expansion data as another test of the parallel trends assumption. Finding no effect in this

²⁰ It is important to note that the imprecision of these results is likely driven by the inability to group physicians by their pre-expansion participation in Medicaid or the generosity of their state program. For example, if you re-estimate the labor supply results from the CTS in Table 3 using the entire sample of physicians and not accounting for state program generosity you get estimated effects that are approximately half the size of those in Table 3 and only significant at the 0.10 level.

pre-expansion data provides support for the identification strategy discussed above. Using a sample containing the years 1993-1998, the estimated DD coefficient for having a ten minute or less and a placebo implementation year of 1995 is -0.0541 (0.055). The DDD estimate for the outcome of having a ten minute or less visit, which was the only estimate that was statistically significant in Table 4, for the same sample and placebo date is -0.0018 (0.0668).

Taken together, evidence from the CTS and the NAMCS that the expansion of public health insurance through the creation of SCHIP decreased the number of weekly hours physicians spent with patients. In the CTS, this appears as a reduced number of hours spent on direct patient care. This result is supported by the suggestive evidence from the NAMCS that visit lengths for Medicaid patients seeing pediatricians declined following the implementation of SCHIP. This activities involved in this visit described by this variable would be comparable to those involved in the “direct patient care” measure in the CTS.

The decrease in visit length helps to reconcile the observed change in physician labor supply with other work documenting increased access to care as a result of previous health insurance expansions. Most prominently, Currie and Gruber (1996) found that expansions in Medicaid increased the probability that eligible children would have an office based doctor visit. This result could occur at the same time as a general decline in physician labor supply if the primary means of reducing labor supply was through shorter (rather than simply fewer) visits.

IX. The Effect of SCHIP on Physician Participation in Medicaid

In addition to decreasing hours worked, the model above predicts that the expansion of SCHIP should increase physician participation in the public program. There are a number of ways to measure physician participation in Medicaid. At its most basic, the model predicts that a

greater percentage of physicians should treat Medicaid patients following the expansion of SCHIP. The first column in top panel of Table 5 reports estimates for equation (1) where the dependent variable equals 1 if a physician reports receiving any income from Medicaid. This is the most accurate means in the CTS of identifying if physicians see at least one Medicaid patient. For the sample of all physicians, the proportion of pediatricians who report receiving any income from the program increased by 2.93 percentage points with the implementation of SCHIP.

Another measure for Medicaid participation is changing patient acceptance policies to accept new patients from the program. The CTS asks physicians if their practice is currently accepting patients from Medicaid. The middle panel of results in Table 5 contains the estimates for equation (1) where the dependent indicator variable equals 1 if the physician reports that their practice accepts new Medicaid patients. For all physicians, under the assumption that pediatricians will react similarly to those in other specialties, the implementation of SCHIP increased the probability of accepting new Medicaid patients by 3.6 percentage points.²¹ As predicted, the estimates in column (2) and (3) suggest that this change is driven primarily by physicians who were previously low-Medicaid participators—the Medicaid acceptance probability among these physicians by 9.3 percentage points. The DDD estimate in column (3) is statistically significant (p-value <0.05) and similar in magnitude to the DD estimate.

Following the implementation of SCHIP, the CTS did not ask separate questions regarding a physician's involvement with SCHIP and Medicaid. That is, there are no data

²¹ Similar to the labor supply results, there may be a concern that a differing concentration of primary care physicians among pediatricians may bias these Medicaid participation estimates. In order to examine this question, I re-estimated the results in Table 5 using a sample of physicians who are classified in the CTS as being primary care physicians. The unreported coefficient for low-Medicaid participating physicians was a statistically significant (p-value <0.05) 0.5335 (0.2771) suggesting that the expansion of SCHIP caused an increase in Medicaid participation among low-Medicaid participating physicians of approximately 11 percent. This is very similar in magnitude to the corresponding estimate in Table 5. Overall, the unreported results using only primary care physicians provide evidence that the estimates above are not the result of differing pre-SCHIP trends between the treatment and control group resulting from pediatricians being more likely to be primary care physicians.

describing physician participation in SCHIP separate from Medicaid. However, this problem does not affect physicians located in states that did not implement SCHIP solely through a separate state program. The bottom panel of Table 5 reports estimates from the same equations as the top panel for pediatricians in states that implemented SCHIP through an expansion of the existing Medicaid program. For most of the outcomes, the estimates in the bottom panel are larger in magnitude than their counterparts in the top panel. For example, the increase in the probability of treating any new Medicaid patients for low-Medicaid participating physicians is twice as large in states that implemented SCHIP through an expansion of their existing program.

The final measure of Medicaid participation is the amount of revenue received by the practice from the public program. Recall from above that one concern with the CTS is that the revenue data refer to practice rather individual physician revenue. While there is a large amount of correlation between physician and practice revenue in many settings, it is possible that this correlation is much weaker in a large multi-specialty practices, hospitals, or clinics. Table 6 contains the estimates from equation (1) with a dependent variable equal to the percentage of practice revenue from Medicaid for a sample of physicians who report being in either solo or two physician practices. In these settings, the practice revenue may reflect closely the revenue of an individual physician. Column (1) of Table 6 contains the estimates for a sample of physicians in all states. The passage of SCHIP is associated with a 1.45 percentage point increase (p -value < 0.10) in revenue from Medicaid. The effect for low-Medicaid participating pediatricians was a 2.6 percentage point increase, statistically significant at a p -value 0.10.

As discussed above, in addition to the concern over practice level revenue the CTS does not ask questions about SCHIP revenue separate from Medicaid revenue. Therefore, revenue data for physicians in states with separate SCHIP programs should not account for revenue from

these programs. Columns 2, 3 and 4 of Table 6 present separate analyses for three types of SCHIP expansions: separate state programs, Medicaid expansions, and states which implemented a combination of these programs. The estimated effect on the percentage of revenue from Medicaid increases monotonically as the role of Medicaid in the expansion increases. For states with only a state SCHIP program, the revenue increase is not statistically significant for low-Medicaid participation pediatricians. For physicians practicing in states with a combination of the two expansion types, there is a 1.97 percentage point increase that is statistically significant at a p-value of 0.05. I find the largest effect for physicians in a Medicaid expansion states—a 9.34 percentage point increase that is statistically significant at a p-value of 0.05.

It is important to note that this pattern of results is likely due to revenue reporting and not necessarily a reflection of difference in physician behavior. An increase in revenue from SCHIP in states with a separate state program would not necessarily be reported to the CTS as “Medicaid revenue”, while the increase in revenue from SCHIP in Medicaid expansion states would be included in these data. Therefore, revenue estimates from states with a separate state program should be considered an underestimate of the revenue effect of the expansion

One might also ask whether adjustments in physician participation in Medicaid reflect changes in physician business practices across dimensions that are unrelated to SCHIP. If this were true, then we might expect to find changes in the percentage of revenue or the probability of treating at least one patient from other insurance programs. The CTS asks questions on the percentage of revenue from managed care insurers or from pre-paid capitated insurers. Table 8 contains estimates of the effect of SCHIP expansions on physician participation in these other programs for all physicians and those in small practice settings. None of the estimates are

statistically significant, suggesting that the main participation results are not simply reflecting a general change in the business practices.²²

X. Conclusions

Under a simple set of assumptions, a mixed-economy model of physician behavior predicts that a public health insurance program should lead to a decrease the quantity of medical services provided by physicians and an increase in physician participation. In this paper, I provide empirical evidence supporting these predictions. Following the implementation of SCHIP, pediatricians with little previously participation in the Medicaid program decreased the number of weekly hours spent on patient care. Of course, it is more difficult to assess the actual effect of this decrease on patient access to physician services. Evidence from the NAMCS suggests that physicians' labor supply decrease plays out through shorter visits with each patient. Overall, the introduction of new public health insurance programs may simply change the nature of patient-physician interactions—for example, physicians could rely on physician assistants and registered nurses to provide more basic medical services. Additional research is needed to investigate the welfare effects of the program change.

Results from this paper can help economists and policymakers understand physician responses to policy changes such as the public health insurance expansion contained in the recently-passed PPACA in the United States. While many policies are being implemented simultaneously in the PPACA, results from my current study suggest that the effect of the public insurance expansion-related changes should increase physician participation in the program but

²² Given that some patients are shifting from the private market to Medicaid following SCHIP, it might be reasonable to expect a decrease for some of these insurance programs. Since the CTS does not distinguish between Medicaid managed care and private manage care, it is not clear if these managed care patients are solely from the private sector or if they are part of Medicaid managed care. The estimated effects for the pre-paid capitated systems are negative for each instance.

lower physician labor supply. This information should be integrated into any analysis of the overall effect of the legislation, which also contains many provisions expected to increase physician labor supply.

It is important to note that this study focuses on a policy's short run effects on Medicaid participation and physician labor supply. Further research is needed to understand the long run general equilibrium effects, particularly the impact on the total number of physicians and overall physician quality. As government involvement in the healthcare sector changes and policy-makers discuss the possibility of a "public option" government insurance program in the forthcoming insurance exchanges, these long run effects become increasingly important. For example, changes in the expected return to physicians may decrease the total number or quality of individuals applying to medical school. While not addressing this question directly, my finding that patient hours decreased as a result of increased government involvement is not encouraging.

In addition to building our understanding the effects a public health insurance expansion on physician behavior, results of the current paper shed light on the target efficiency of SCHIP. The existing literature contains a wide range of estimates of the degree of crowd-out, including some studies that find that newly enrolled public health insurance recipients did not previously have health coverage. The pattern of results with respect to labor supply and public program participation that I identify suggests market effects are being driven by changes in the marginal patient and not by changes in the physician labor supply curve. Since these results could only occur in the presence of some degree of crowd out, this paper provides further evidence supporting the crowd-out hypothesis.

References

- Adams, Kathleen. 1994. "The Effect of Increased Medicaid Fees on Physician Participation and Enrollee Service Utilization in Tennessee." *Inquiry* 31:173-89.
- Association of American Medical College. 2010. "Physician Shortages to Worsen Without Increases in Residency Training," available online at:https://www.aamc.org/download/150584/data/physician_shortages_to_worsen_without_increases_in_residency_tr.pdf.
- Baker, Laurence, and Anne Royalty. 2000. "Medicaid Policy, Physician Behavior, and Health Care for the Low-Income Population," *The Journal of Human Resources*, 35: 480-502.
- Blumberg, Linda, Dubay, Lisa, Norton, Stephen, 2000. "Did the Medicaid expansions for children displace private insurance? An analysis using the SIPP." *Journal of Health Economics* 19 (1), 33–60.
- Bronstein, Janet, Kathleen Adams, and Curtis Florence. 2004. "The Impact of S-CHIP Enrollment on Physician Participation in Medicaid in Alabama and Georgia." *Health Services Research*, 39: 301-318.
- Card, David and Lara Shore-Sheppard. 2004. "Using discontinuous eligibility rules to identify the effects of the federal Medicaid expansions on low income children," *Review of Economics and Statistics* 86 (3), 752–766.
- Congressional Budget Office. 2010. "Cost Estimate of H.R. 4872, the Reconciliation Act of 2010," March 20, 2010.
- Crane, Thomas. 1992. "The Problem of Physician Self-Referral under the Medicare and Medicaid Antikickback Statute," *Journal of the American Medical Association*, 268: 85-91.
- Cromwell, Jerry and Janet Mitchell. 1986. "Physician-induced Demand for Surgery," *The Journal of Health Economics*, 5: 293-313.
- Currie, Janet and Jonathan Gruber. 1996. "Health Insurance Eligibility, Utilization of Medical Care, and Child Health," *Quarterly Journal of Economics*, 111: 431-466.
- Cutler, David and Jonathan Gruber. 1996. "Does Public Insurance Crowd Out Private Insurance," *Quarterly Journal of Economics*, 111: 391-430.
- Cunningham, Peter and Jessica May. 2006. "Medicaid Patients Increasingly Concentrated Among Physicians," Center For Study Health System Change, Tracking Report No. 16.
- Dranove, David. 1998. "Demand Inducement and the Physician/Patient Relationship," *Economic Inquiry*, 26: 281-298.
- Dranove, David and Paul Wehner. 1994. "Physician-induced Demand for Childbirths," *The Journal of Health Economics*, 13: 61-73.
- Dubay, Lisa and Genevieve Kenney. 1996. "Revisiting the issues: the effects of Medicaid expansions on insurance coverage of children," *The Future of Children*, 6 (1), 152–161.
- Dubay, Lisa and Genevieve Kenney. 1997. "Did Medicaid expansions for pregnant women crowd out private insurance?" *Health Affairs*, 16 (1), 185–193.

- Enterline, Philip, Corbett McDonald, and Alison McDonald, "Effects of Free Medical Care on Medical Practice—The Quebec Experience," *The New England Journal of Medicine*, 288: 1152-1155.
- Fuchs, Victor. 1978. "The Supply of Surgeons and the Demand for Operations." *The Journal of Human Resources*, S: 35-56.
- Garner, Dewey, Winston Liao, and Thomas Sharpe. 1979. "Factors Affecting Physician Participation in a State Medicaid Program," *Medical Care*, 17: 43-58.
- Gruber, Jonathan and Kosali Simon. 2008. "Crowd out 10 years later: Have recent public insurance expansions crowded out private health insurance?." *Journal of Health Economics*, 27: 201:217.
- Gruber, Jonathan, Kathleen Adams, and Joseph Newhouse. 1997. "Physician Fee Policy and Medicaid Program Costs," *The Journal of Human Resources*, 32: 611-634.
- Gruber, Jonathan, John Kim, and Dina Mayzlin. 1999. "Physician Fees and Procedure Intensity: The Case of Cesarean Delivery," *Journal of Health Economics*, 18: 473-490.
- Gruber, Jonathan and Margaret Owings. 1996. "Physician Financial Incentives and Cesarean Section Delivery," *RAND Journal of Economics*, 27: 99-123.
- Ham, Jon and Lara Shore-Sheppard. 2005. "The effect of Medicaid expansions for low-income children on Medicaid participation and private insurance coverage: evidence from the SIPP," *Journal of Public Economics* 89: 57–83.
- Herz, Elicia, Bernadette Fernandez, and Chris Peterson. 2005. "State Children's Health Insurance Program (SCHIP): A Brief Overview."
- Hillman, Bruce, Catherine Joseph, Michael Mabry, Jonathan Sunshine, Stephen Kennedy, and Monica Noether. 1990. "Frequency and Costs of Diagnostic Imaging in Office Practices: A comparison of Self-Referring and Radiologist Referring Physicians," *New England Journal of Medicine*, 323: 1604-1608.
- Hillman, Bruce, George Olson, Patricia Griffith, Jonathan Sunshine, Catherine Joseph, Stephen Kennedy, William Nelson, and Lee Bernhardt. 1992. "Physicians' Utilization and Charges for Outpatient Diagnostic Imaging in a Medicare Population." *Journal of the American Medical Association*, 268: 2050-2054.
- Lo Sasso, Anthony, Thomas Buchmueller. 2004. "The effect of the state children's health insurance program on health insurance coverage," *Journal of Health Economics*, 23(5): 1059-1082.
- McGuire, Thomas and Mark Pauly. 1991. "Physician Response to Free Changes with Multiple Payers," *Journal of Health Economics*, 10: 385-410.
- Mitchell, Jean and Elton Scott. 1992. "Physician Ownership of Physical Therapy Services; Effects on Charges, Utilization, Profits, and Service Characteristics." *Journal of the American Medical Association*, 268: 2055-2059.
- Mitchell, Janet. 1991. "Physician Participation in Medicaid Revisited." *Medical Care*, 29: 645-653

- Mitka, Mike. 2007. "Looming Shortage of Physicians Raises Concerns About Access to Care." *Journal of the American Medical Association*, 297: 1045-1046.
- Pauly, Mark. 1980. *Doctors and Their Workshops*. Chicago: University of Chicago Press.
- Pear, Robert. 2009. "Obama Signs Children's Health Insurance Bill." *New York Times*.
- Perloff, Janet, Phillip Kletke, James Fossett, and Steven Banks. 1997. "Medicaid Participation Among Urban Primary Care Physicians." *Medical Care*, 35: 142-157.
- Salganicoff, Alina, Patricia Seliger Keenan, and David Liska. 1998. "Child Health Facts: National and State Profiles of Coverage," *A Report of the Kaiser Commission on the Future of Medicaid*.
- Sloan, Frank, Janet Mitchell, and Jerry Cromwell. 1978. "Physician Participation in State Medicaid Programs." *The Journal of Human Resources*, 13: 211-245.
- Smith, Vernon, Dennis Roberts, David Rousseau, and Tanya Schwartz. 2010. "CHIP Enrollment June 2009: An Update on Enrollment and Policy Directions," *Kaiser Commission on Medicaid and the Uninsured*.
- Staiger, Douglas, David Auerback, Peter Buerhaus, "Trends in the Work Hours of Physicians in the United States," *Journal of the American Medical Association*, 303: 747-753.
- United States Census. 2010. *Income, Poverty, and Health Insurance Coverage in the United States: 2009*. Washington, DC: United States Census.
- Yazici, E., Kaestner, R., 2000. "Medicaid expansions and the crowding out of private health insurance among children," *Inquiry* 37: 23-32.
- Zuckerman, Stephen, Joshua McFeeters, Peter Cunningham, and Len Nichols. 2004. "Changes in Medicaid Physician Fees, 1998-2003: Implications for Physician Participation," *Health Affairs*, W4-374-W4-384.
- Zuckerman, Stephen and Stephen Norton. 2000. "Trends in Medicaid Physician Fees, 1993-1998," *Health Affairs*, 19: 222-232.

Figure 1

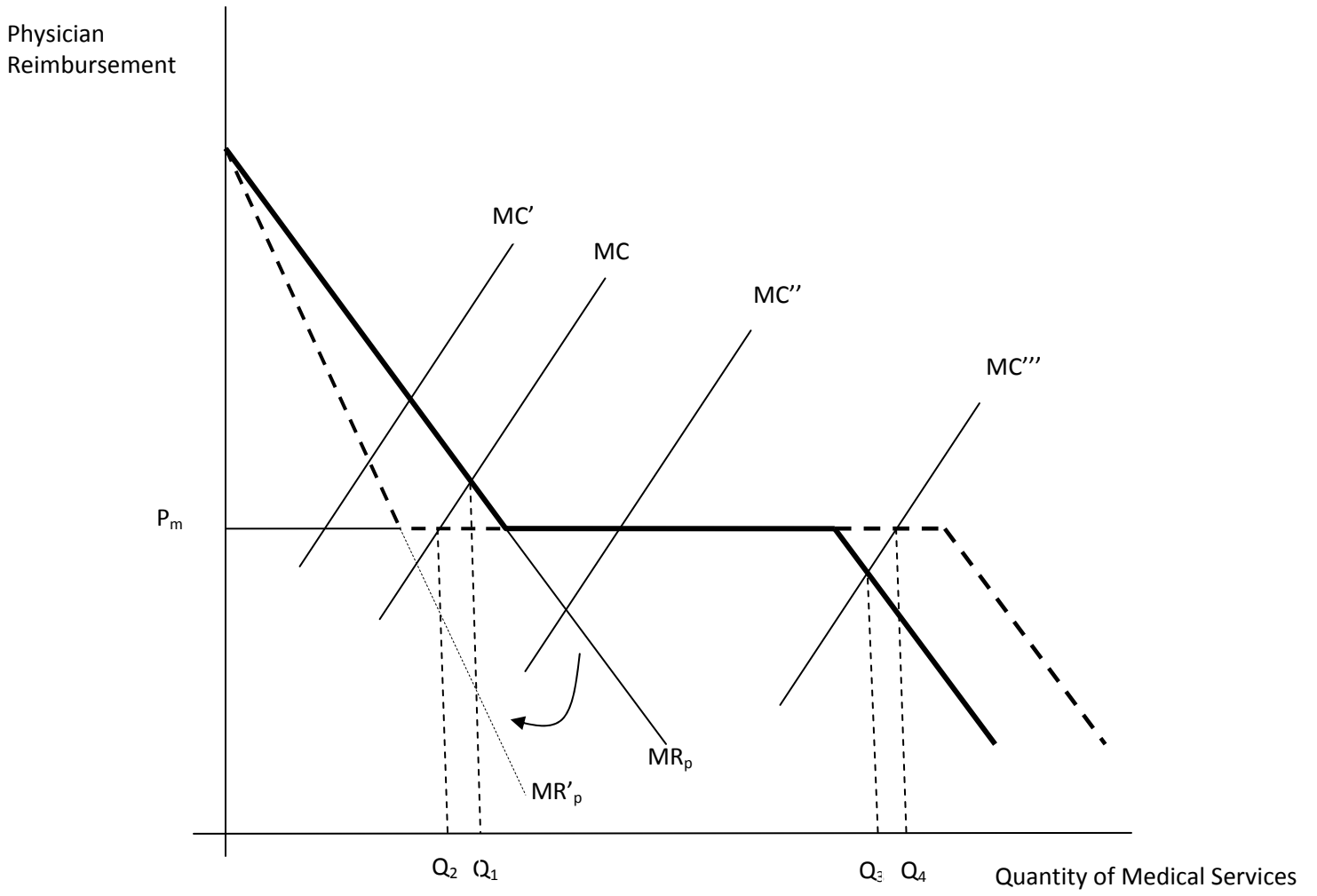


Figure 2
 Mean Visit Duration for Medicaid Patients by Physician Type, NAMCS 1993-2002

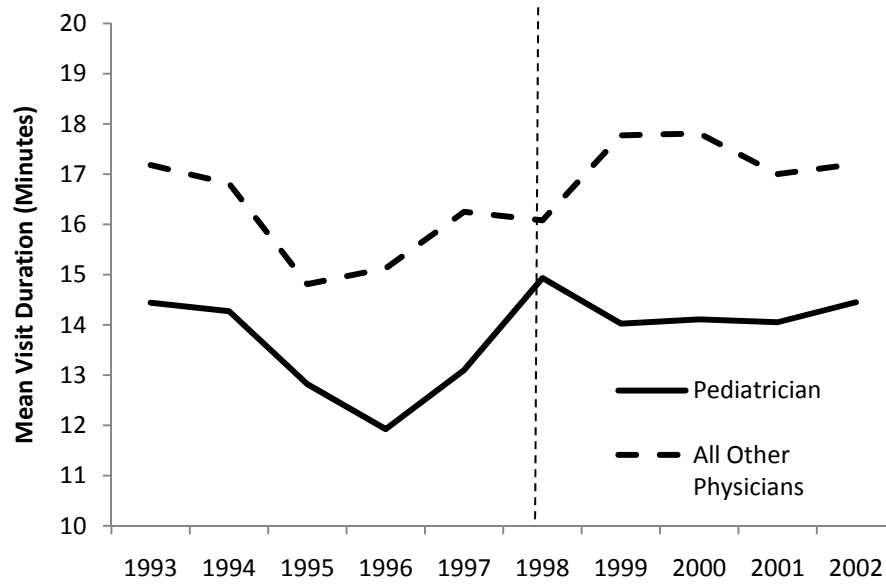


Figure 3
 Mean Pediatrician Visit Duration by Insurance Status, NAMCS 1993-2002

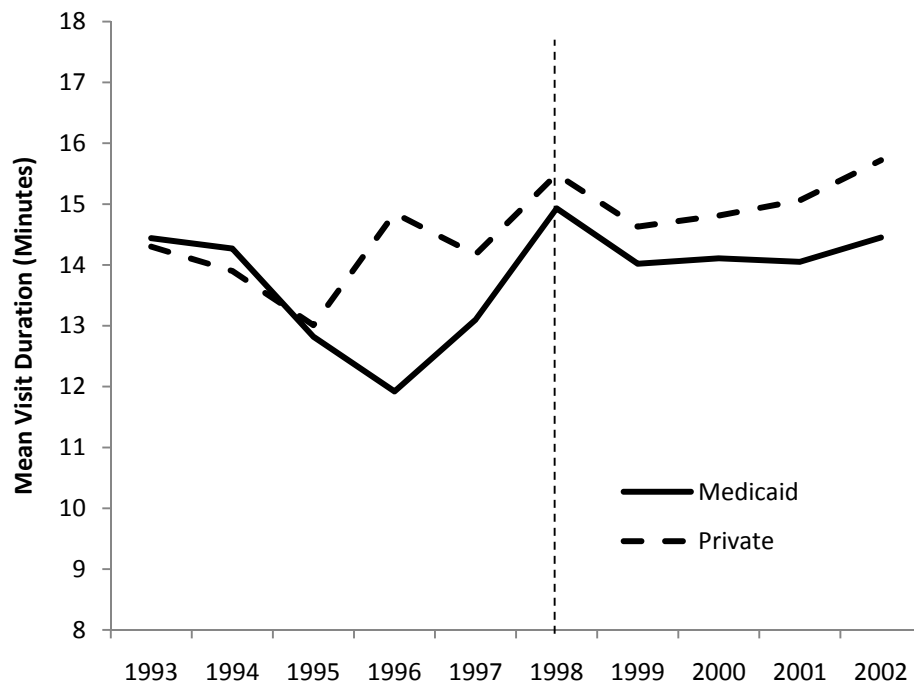


Figure 4

Parameter Estimate of Interaction Term of Treatment Variable and Year Effect for Difference-in-Differences Identification Strategy
Pediatricians, Internists, and General Practitioners, NAMCS 1993-2002

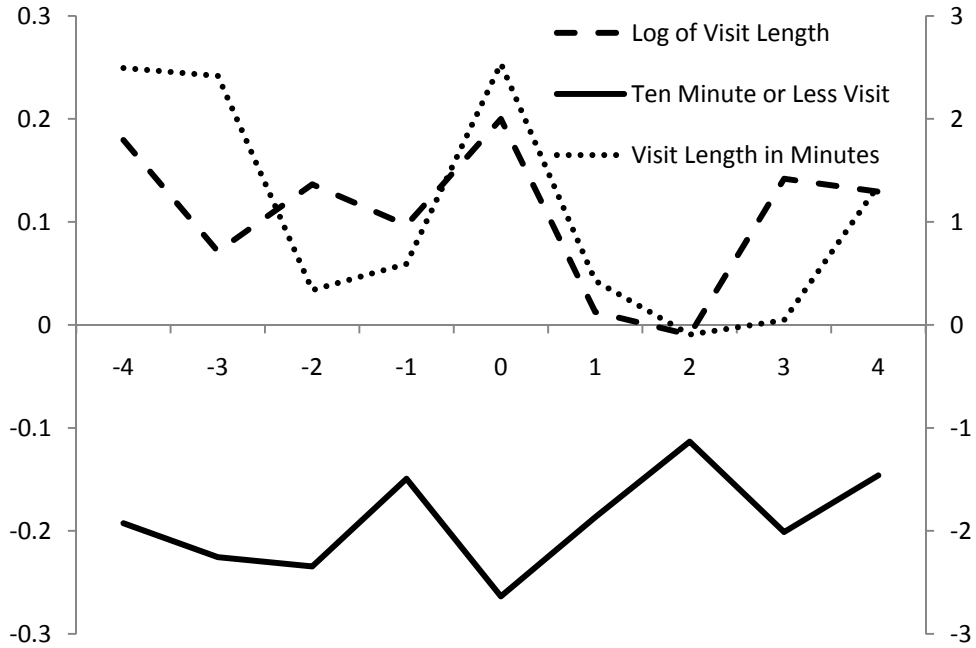


Figure 5

Parameter Estimate of Interaction Term of Treatment Variable and Year Effect for Difference-in-Differences Identification Strategy
Pediatricians, Internists, and General Practitioners, NAMCS 1993-2002

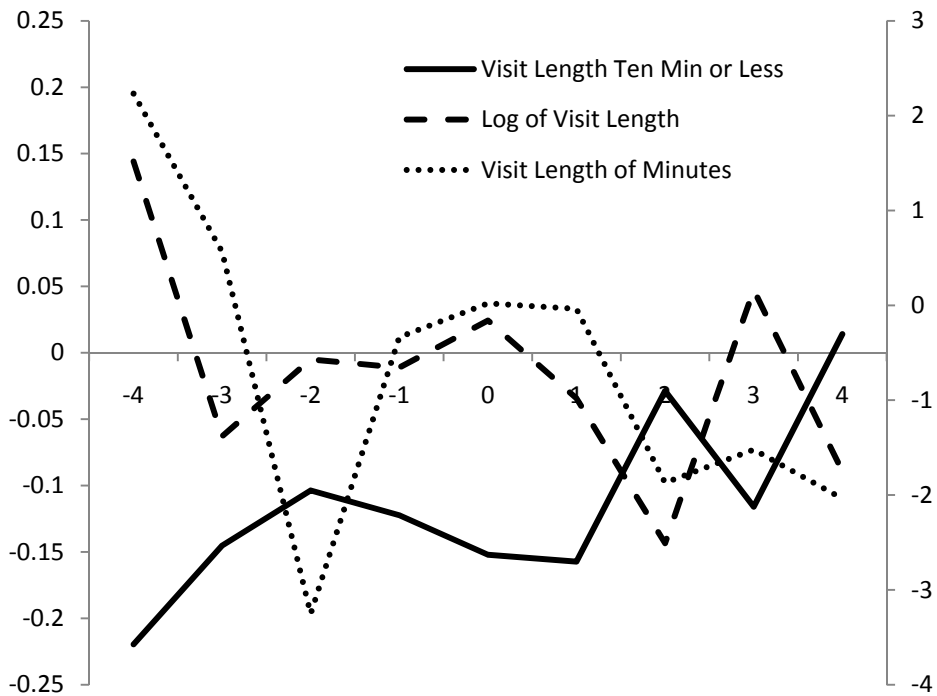


Table 1
Physician Characteristics by Specialty Type

	Less than or equal to 5 percent of revenue from Medicaid in 1997				More than 5 percent of revenue from Medicaid in 1997			
	Primary Care Phys. (%)	Weekly Hours Spent on Patient Care	Practice Revenue from Medicaid (%)	Accept New Medicaid Patients (%)	Primary Care Phys. (%)	Weekly Hours Spent on Patient Care	Practice Revenue from Medicaid (%)	Accept New Medicaid Patients (%)
Internal Medicine	99.58	45.82	2.69	56.1	99.37	45.93	19.39	78.82
GP and Family	100.00	43.38	2.43	48.74	100.00	44.67	21.47	93.37
Pediatrics	100.00	41.92	2.31	59.14	99.22	42.34	33.7	95.59
Medical Specialties	2.98	44.35	3.01	72.19	0.00	46.54	20.45	97.7
Surgical Specialties	0.00	45.5	3.16	74.6	0.00	48.87	15.65	98.72
OB/GYN	0.00	36.46	1.12	27.06	0.00	37.65	30.81	92.0
Psychiatry	0.00	48.07	2.47	49.68	0.00	49.17	28.4	99.4

Source: Consumer Tracking Study Physician Survey 1996-97

Table 2
Simulated Eligibility Measure of Medicaid and SCHIP Eligibility

	Mean	25 th Percentile	75 th Percentile	Min	Max
1996	0.2956	0.2663	0.2957	0.2504	0.5977
1999	0.4525	0.431	0.4834	0.282	0.7961
2001	0.5041	0.4497	0.5377	0.3359	0.7922
Δ 2001 – 1996	0.2085	0.162	0.235	0.054	0.4948

Source: Current Population Survey Calculations

Table 3
Fixed Effect Estimates of the Effect of the Expansion of SCHIP on Physician Labor Supply

	Hours Spent on Patient Care		Hours Spent on Medical Care	
	Rev. from Medicaid ≤ 5%	All Physicians	Rev. from Medicaid ≤ 5%	All Physicians
	(1)	(2)	(3)	(4)
PED*SIMELIG	-9.5702** (3.5866)	-0.0818 (3.867)	-5.268 (3.576)	1.2285 (3.2817)
PED*SIMELIG *5%MCAID		-9.6344* (5.4317)		-6.512 (4.851)
N	2,142	5,060	2,142	5,060
N*T	6,107	14,345	6,107	14,345

Medicaid Expansion States Only				
PED*SIMELIG	-16.574** (5.7602)	2.144 (5.329)	-16.962** (6.206)	0.8263 (4.269)
PED*SIMELIG*5%MCAID		-18.275** (7.77)		-16.966** (7.361)
N	454	1,090	454	1,090
N*T	1,284	3,148	1,284	3,148

Entries in the table are the estimates coefficients from a fixed effects panel regression. Unreported covariates include indicator variables for CTS interview panel and controls for changes in the Medicaid reimbursement rate. Standard errors are in parentheses and are clustered at the individual level and regressions are weighted using CTS national sample weights.

* P-value ≤ 0.10 ** P-value ≤ 0.05 *** P-value ≤ 0.001

Table 4
Summary of Estimates on the Effect of SCHIP on Visit Duration
National Ambulatory Medical Care Survey 1993-2002

	DD Estimate (n= 10,704)	DDD Estimate (n= 93,670)
Duration	-0.9776 (0.7967)	-1.193 (0.7432)
Ln(Duration)	-0.056 (0.0496)	-0.0687 (0.0469)
Visit Shorter than 10 Minutes	0.0326 (0.0479)	0.0649* (0.038)

Entries in the tables are the estimated coefficients from an OLS model. Unreported covariates include controls for visit month, day, year, patient race, patient ethnicity, patient age, practice region, practice MSA status, physician type, and whether ambulatory surgical services were performed. Standard errors are in parentheses and are clustered on the primary sampling unit.

* P-value ≤ 0.10 ** P-value ≤ 0.05 *** P-value ≤ 0.001

Table 5
Fixed Effect Estimates of the Effect of the Expansion of SCHIP on Medicaid Participation

All States			
	Treating at Least One Medicaid Patient		
	All Physicians (1)	Rev. from Medicaid \leq 5% (2)	All Physicians (3)
PED*SIMELIG	0.1403** (0.0533)	0.3283** (0.1366)	0.057 (0.0367)
PED*SIMELIG *5%MCAID			0.286** (0.1421)
Accepting New Patients from Medicaid			
PED*SIMELIG	0.1735** (0.0626)	0.4446** (0.1398)	0.07189 (0.0565)
PED*SIMELIG *5%MCAID			0.3606** (0.1501)
Medicaid Expansion States Only			
	Treating at Least One Medicaid Patient		
	All Physicians (1)	Rev. from Medicaid \leq 5% (2)	All Physicians (3)
PED*SIMELIG	0.1969* (0.1082)	0.6322** (0.3140)	0.0012 (0.0605)
PED*SIMELIG *5%MCAID			0.638** (0.3211)
Accepting New Patients from Medicaid			
PED*SIMELIG	0.1497 (0.1153)	0.5549** (0.2697)	0.0009 (0.111)
PED*SIMELIG *5%MCAID			0.5405* (0.2907)

Entries in the table are the estimates coefficients from a fixed effects panel regression. Unreported covariates include indicator variables for CTS interview panel and controls for changes in the Medicaid reimbursement rate. Standard errors are in parentheses and are clustered at the individual level and regressions are weighted using CTS national sample weights.

* P-value \leq 0.10 ** P-value \leq 0.05 *** P-value \leq 0.001

Table 6
Fixed Effect Estimates of the Effect of the Expansion of SCHIP on Percentage of Revenue from Medicaid
Solo or Two Physician Practices

	All States (1)		Separate State Program (2)		Combination Program (3)		Medicaid Expansion States (4)	
	All Physicians	Medicaid Rev. ≤ 5%	All Physicians	Medicaid Rev. ≤ 5%	All Physicians	Medicaid Rev. ≤ 5%	All Physicians	Medicaid Rev. ≤ 5%
PED*	6.127*	12.083**	-0.584	4.094	7.948*	9.52**	11.917	45.478**
SIMELIG	(3.809)	(4.76)	(7.089)	(5.997)	(4.89)	(3.405)	(10.302)	(17.723)
N	2,311	1,163	792	374	1,095	600	421	193
N*T	5,439	2,821	1,756	854	2,546	1,521	934	446

Entries in the table are the estimates coefficients from a fixed effects panel regression. Unreported covariates include controls for CTS panel and controls for changes in the Medicaid reimbursements. Standard errors are in parentheses and are clustered at the individual level and regressions are weighted using CTS national sample weights.

* P-value ≤ 0.10 ** P-value ≤ 0.05 *** P-value ≤ 0.001

Table 7
Fixed Effect Estimates of the Effect of the Expansion of SCHIP on Revenue from Non-Medicaid Insurers
Physicians Reporting Medicaid Revenue ≤ 5% prior to SCHIP

	At least one patient from a managed care organization	At least one patient from a pre-paid capitated insurer	Percent revenue from a managed care organization	Percent revenue from pre-paid capitated insurer
PED*SIMELIG	-0.114 (0.0825)	-0.1545 (0.1239)	0.821 (9.954)	-10.9 (9.409)
	2,142	2,142	2,142	2,142
	6,107	6,107	6,107	6,107
Solo or Two Practice Physicians Only				
PED*SIMELIG	0.0449 (0.0703)	-0.239 (0.1889)	4.948 (11.4)	1.762 (7.061)
N	1,163	1,163	1,163	1,163
N*T	2,821	2,821	2,821	2,821

Entries in the table are the estimates coefficients from a fixed effects panel regression. Unreported covariates include controls for CTS panel and controls for changes in the Medicaid reimbursements. Standard errors are in parentheses and are clustered at the individual level and regressions are weighted using CTS national sample weights.

* P-value ≤ 0.10 ** P-value ≤ 0.05 *** P-value ≤ 0.001